

KAMMA

Property licensing update

October 2023

The latest schemes and
property licensing news



kammadata.com

Latest schemes and announcements

Starting soon

Luton

What type of licensing?

Selective

When will the scheme run?

30th October 2023 - 29th October 2028

Redbridge

What type of licensing?

Selective

When will the scheme run?

1st November 2023 - 31st October 2028

Southwark

What type of licensing?

Selective

When will the scheme run?

1st November 2023 - 31st October 2028

Nottingham

What type of licensing?

Selective

When will the scheme run?

1st December 2023 - 30th November 2028

Starting next year

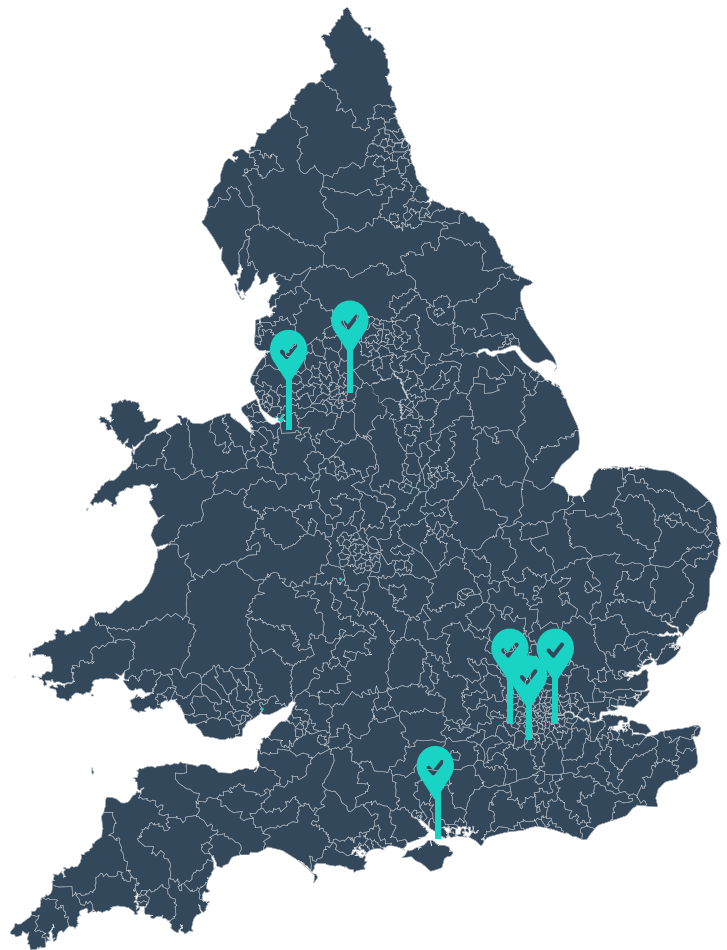
Islington

What type of licensing?

Selective

When will the scheme run?

1st January 2024 - 31st December 2028



Active consultations

- North Yorkshire (Selective)
- Bristol (Selective & Additional)
- Northumberland (Selective)

Started last month

- Worcester (Additional)
- Portsmouth (Additional)
- Redbridge (Additional)
- Merton (Selective & Additional)

Has property licensing just been introduced in your area?

[Find out how we can help](#)

Rogue Landlord Tracker

The latest fines and top stories

Total fines fly up by over £100k

The Mayor of London's office opened access to the Rogue Landlord and Agent Database, allowing individuals to search for enforcement action in the capital.

We track and aggregate this dataset to discover enforcement trends. The highlights are shown below, with a focus on the rising total number of fines levied against poor practice

As councils catch up with a reporting in the wake of unprecedented enforcement, fines have reached **£9.85 million** mark, having increased by £110k since the beginning of September

Total enforcement in London is now under £150k away from hitting the £10 million milestone.



£9,852,205

Total fines imposed across all London boroughs

£7,738,269

Total fines relating to property licensing and regulations

£167k

Largest single fine against an agent for failing to comply with regulations

£4,793

Average amount for fines imposed on agents for all types of offences

Top 10 London Local Authorities

Highest level of enforcement

| | |
|------|----------------|
| 1st | Camden |
| 2nd | Newham |
| 3rd | Waltham Forest |
| 4th | Southwark |
| 5th | Brent |
| 6th | Westminster |
| 7th | Greenwich |
| 8th | Tower Hamlets |
| 9th | Havering |
| 10th | Lewisham |

Worried about fines?

[Click here](#) to learn more about how Kamma can help you passively protect your business from risk of fines



September's Top Rogue Landlord Stories

Flintshire Landlord Faces £27,460 in Fines for Overlooking Tenant Conditions

A landlord based in Flintshire County council has been fined £27,460 for neglecting property maintenance and violating HMO licence conditions.

Inspections revealed multiple violations in the property, including defective fire doors and a lack of hot water.

Derby Landlord Fined Nearly £10,000 in Fines for Neglecting Boiler Repairs

A Derby City Council landlord was fined nearly £10,000 for failing to provide adequate heating and hot water.

Despite urgent pleas and a formal notice, the landlord ignored the required repairs, compelling the council to intervene.

Agency Fined Over £10,000 for Managing an Unlicensed Property

A property management and letting agency has been fined £10,799 by Enfield Council for managing an unlicensed property, breaching the council's selective licensing scheme.

The agency received a £7,500 fine, was ordered to pay £1,299 in costs, and an additional £2,000 victim surcharge.

[See the full monthly round up here](#)

Atom and Kamma announce major new partnership to tackle risks of climate change

Alliance combines best-in-class banking tech with best-in-class climate tech to deliver complete view on climate risks associated with the Atom bank mortgage book



Atom Bank has entered into partnership with Kamma to enhance its climate risk management and support its commitment to becoming carbon positive by 2035.

This collaboration grants Atom access to Kamma's comprehensive climate suite, enabling a detailed view of the physical and transition risks within its mortgage book.

Kamma's solutions will aid in regulatory reporting, green asset qualification, and risk management, supporting Atom in reducing environmental impact.

The partnership will undergo two phases, focusing initially on a thorough review of the mortgage portfolio and subsequently on the development of innovative products and customer journeys aligned with Atom's new strategy

[See the full announcement](#)

Want to know how much of your portfolio is unlicensed?

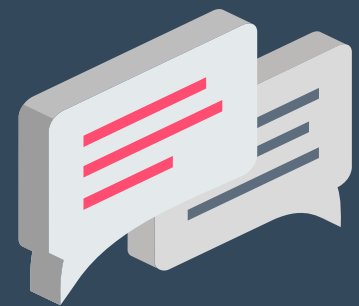
Property regulations are diverse, complex, and ever changing. We leverage data and tech to quickly provide lenders with clear and reliable answers. [Click here](#) to learn more.



Partnerships and integrations



Get in touch now
to turn risk into
revenue



About Kamma

Kamma puts companies back in control of their compliance through data-driven technology solutions. They mine unstructured legislative information and harness AI to de-risk markets, deliver operational efficiencies, protect reputations and open up new revenue opportunities

Visit the site at
kammadata.com

Speak to the team:
hello@kammadata.com

[Book a demo](#)