

# KAMMA

## Property licensing update

September 2023

The latest schemes and  
property licensing news



[kammadata.com](https://kammadata.com)

# Latest schemes and announcements

## Starting this month

### Worcester

What type of licensing?

**Additional**

When will the scheme run?

**1st September 2023 - 31st August 2028**

### Portsmouth

What type of licensing?

**Additional**

When will the scheme run?

**1st September 2023 - 31st August 2028**

### Redbridge

What type of regulation?

**Additional**

When will the scheme run?

**18th September 2023 - 17th September 2028**

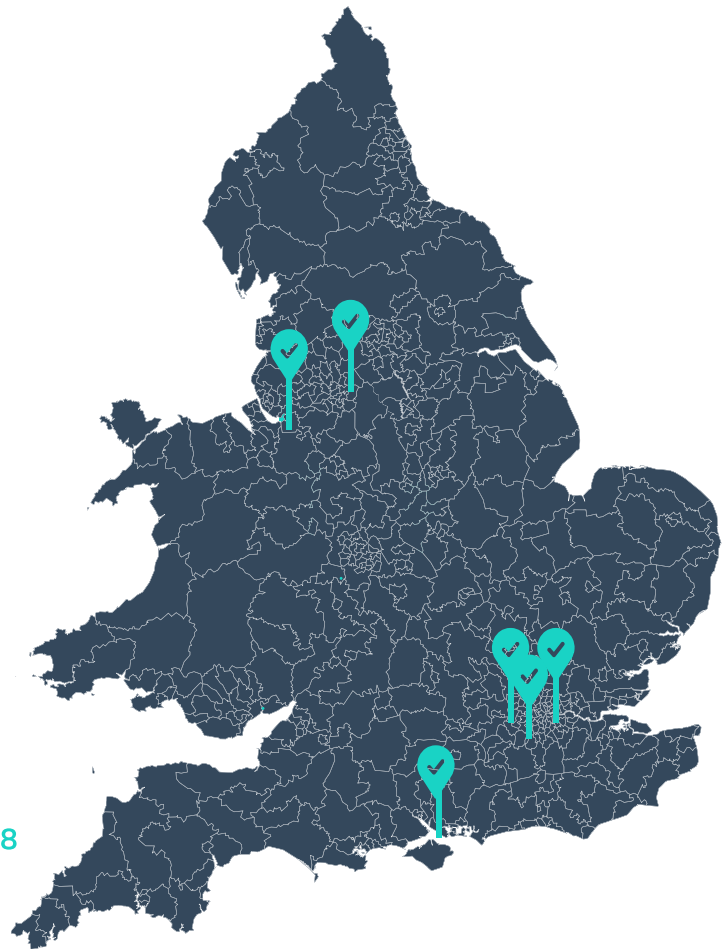
### Merton

What type of regulation?

**Additional & Selective**

When will the scheme run?

**24th September 2023 - 23rd September 2028**



## Later this year

### Luton

What type of licensing?

**Selective**

When will the scheme run?

**30th October 2023 - 29th October 2028**

### Active consultations

- Lancaster (Additional)
- Bristol (Selective & Additional)
- Wirral (Selective)

### Started last month

- Brent (Selective)
- Manchester (Selective)
- Blackburn with Darwin (Article 4)

Has property licensing just been introduced in your area?

[Find out how we can help](#)

# Rogue Landlord Tracker

The latest fines and top stories

## Total fines rocket towards £10 million

The Mayor of London's office opened access to the Rogue Landlord and Agent Database, allowing individuals to search for enforcement action in the capital.

We track and aggregate this dataset to discover enforcement trends. The highlights are shown below, with a focus on the rising total number of fines levied against poor practice

As councils catch up with a reporting in the wake of unprecedented enforcement, fines have soured past the **£9.7 million** mark, with £10 million before the end of 2023 now looking more likely than ever. This includes a nearly £600k jump in fines relating to property licensing and regulations alone. The average fine imposed on agents has also increased by nearly £130 since last month.



# £9,742,205

Total fines imposed across all London boroughs

## £7,646,669

Total fines relating to property licensing and regulations

## £167k

Largest single fine against an agent for failing to comply with regulations

## £4,806

Average amount for fines imposed on agents for all types of offences

### Top 10 London Local Authorities

Highest level of enforcement

1st	Camden
2nd	Newham
3rd	Waltham Forest
4th	Southwark
5th	Brent
6th	Westminster
7th	Greenwich
8th	Tower Hamlets
9th	Havering
10th	Lewisham

## Worried about fines?

[Click here](#) to learn more about how Kamma can help you passively protect your business from risk of fines



# August's Top Rogue Landlord Stories

## Haringey Council Hits Non-compliant Landlords with £200,000 Fine

Haringey Council in London has shown its commitment to ensuring housing standards in the Private Rented Sector (PRS) by imposing fines totalling £207,500 on landlords who failed to license their HMO properties.

## Councils Tighten Grip on Non-compliant Landlords with £32,000 in Fines

In a renewed effort to uphold housing standards, two prominent councils have imposed fines totalling over £32,000 on landlords.

## Dagenham Landlord Faces £15,000 Reimbursement for Overlooking Tenant Conditions

In a recent enforcement action, a Dagenham landlord has been directed to return almost £15,000 in rent after tenants were subjected to hazardous and unsanitary living conditions.

## Cambridge Landlords Face Over £8,000 in Penalties for Unlicensed HMOs

In recent enforcement action, Cambridge City Council has imposed fines totalling over £8,000 on three landlords for operating unlicensed HMOs for several years, with fines ranging between £1,900 and £3,500.

[See the full monthly round up here](#)

# Kamma raises £3.6 million to tackle Net Zero in UK homes and commercial property

Investment, led by Clean Growth Fund, will support expansion of Kamma's market-leading property data engine, providing the insights needed to deliver Net Zero for UK property



The investment will power Kamma's property data engine that acquires, integrates, and calibrates thousands of data points in order to deliver optimal routes to achieve Net Zero in the UK property sector.

By using the very latest geospatial technology, Kamma combines data collection and address-matching technology with insightful analysis to articulate the fastest routes to Net Zero.

Kamma is the only tech firm in the UK to develop a whole market proposition. It is also the first to be able to quantify the full emissions footprint of residential property that allows for individual retrofit requirements to be determined.

It is key to empowering agents and landlords alike in keeping up with upcoming climate regulations, such as the Minimum Energy Efficiency Standards (MEES), as they are introduced to the property sector.

[See the full announcement](#)

## Want to know how much of your portfolio is unlicensed?

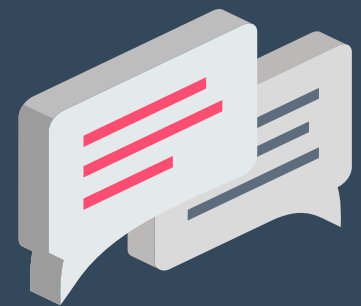
Property regulations are diverse, complex, and ever changing. We leverage data and tech to quickly provide lenders with clear and reliable answers. [Click here](#) to learn more.



## Partnerships and integrations



Get in touch now  
to turn risk into  
revenue



### About Kamma

Kamma puts companies back in control of their compliance through data-driven technology solutions. They mine unstructured legislative information and harness AI to de-risk markets, deliver operational efficiencies, protect reputations and open up new revenue opportunities

Visit the site at  
[kammadata.com](http://kammadata.com)

Speak to the team:  
[hello@kammadata.com](mailto:hello@kammadata.com)

[Book a demo](#)