

# KAMMA

## Property licensing update

July 2023

The latest schemes and  
property licensing news



[kammadata.com](https://kammadata.com)

# Latest schemes and announcements

## New schemes

### Birmingham

What type of licensing?

**Selective & Additional**

When will the scheme run?

**5th June 2023 - 4th June 2028**

### Walsall

What type of licensing?

**Additional**

When will the scheme run?

**1st July 2023 - 30th June 2028**

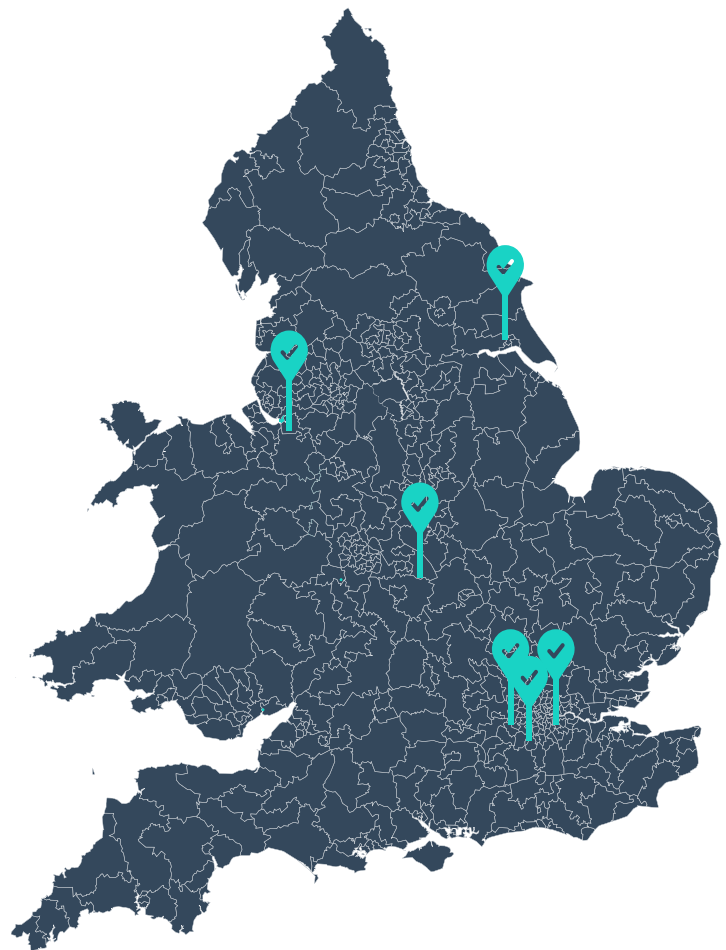
### Middlesbrough

What type of licensing?

**Selective**

When will the scheme run?

**3rd July 2023 - 2nd July 2028**



## Recent announcements

### Merton

What type of licensing?

**Selective & Additional**

When will the scheme run?

**24th September 2023 - 23rd September 2028**

### Southwark

What type of licensing?

**Selective**

When will the scheme run?

**1st November 2023 - 31st October 2028**

### Areas with active consultations:

- Barnet (Selective)
- Exeter (Article 4)
- Lancaster (Selective & Additional)
- Arun (Additional)

### Councils with schemes that started in the last 3 months:

- Newham (Selective)
- Kensington & Chelsea (Additional)
- Bedford (Additional)
- Charnwood (Selective)

Has property licensing just been introduced in your area?

[Find out how we can help](#)

# Rogue Landlord Tracker

## The latest fines and top stories

### A record year for enforcement

\*data correct as of 3rd July 2023

The Mayor of London's office opened access to the Rogue Landlord and Agent Database, allowing individuals to search for enforcement action in the capital. We track and aggregate this dataset for London to discover enforcement trends. Enforcement is back to pre-pandemic levels after a rapid acceleration in the number of fines issued this year, with the total in London now just over **£9 million**.

More than £900,000 in fines has been issued in first half of 2023 alone, close to the £1 million total issued in 2022. Fines are on track to hit £9.4 million by the end of the year, meaning that 2023 is shaping up to be a record year for enforcement.

## £9,067,295

Total fines imposed across all London boroughs

## £7,133,299

Total fines relating to property licensing and regulations

## £167k

Largest single fine against an agent for failing to comply with regulations

## £4,674

Average amount for fines imposed on agents for all types of offences



### Top 10 London Local Authorities - highest level of enforcement

1st	Camden
2nd	Newham
3rd	Waltham Forest
4th	Southwark
5th	Brent
6th	Westminster
7th	Greenwich
8th	Tower Hamlets
9th	Havering
10th	Barking and Dagenham

### May 2023 - Top Rogue Landlord Stories

[Read our full monthly round-up >](#)

Norfolk landlord and their company fined a combined total of £40,000

Hackney-based landlord loses appeal against RRO and pays £16,000 to tenants

Luton landlord, a repeat offender, forced to pay another £15,000 fine

### Worried about fines?

[Click here](#) to learn more about how Kamma can help you passively protect your business from risk of fines



# Further property licensing, compliance and enforcement news

Over 20 new schemes and consultations have launched throughout the UK in 2023, five of which are in London alone. New schemes brings new enforcement, with the Renters (Reform) Bill promising to enhance these efforts.

## Newham Council issues figures on the boroughs' landlord licensing schemes

As it launches a new selective scheme, Newham Council also publishes insight into the boroughs' history of enforcement.

Between 2018 and 2022, Newham Council issued a range of penalties, including banning landlords from operating (84), issuing 'breach of licence' investigations (2,000) and financial penalty final notices (342), levying fines of up to £30,000, and sending over 6,000 enforcement letters to landlords as a warning of further action.

The statistics come as a warning to landlords to make sure they have the required licence to operate, or force the heavy sanctions outlined above.

[Read more](#)

## More Information on the Renters (Reform) Bill's Landlord Database

The Renters (Reform) Bill, released in May this year, mentions a new property portal that would collect all of the information that letting agents, tenants and landlords need to know.

More details have since been released on the database, outlining a range of its key inclusions, from legal requirements to compliance. This means that residential landlords may be expected to make (some) of their personal information available, as well as the properties that they manage and accompanying details about the properties. It may also further highlight rogue landlords that have been in receipt of banning orders, financial penalties, or criminal and civil offences related to property management.

[Read more](#)

## Want to know how much of your portfolio is unlicensed?

Property regulations are diverse, complex, and ever changing. We leverage data and tech to quickly provide lenders with clear and reliable answers. [Click here](#) to learn more.





## Partnerships and integrations



BELVOIR!



urbanspaces



CHESTERTONS

haart



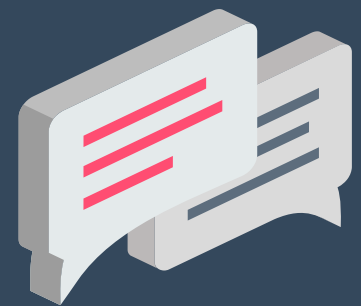
CBRE



COMPLYLEX™



Get in touch now  
to turn risk into  
revenue



### About Kamma

Kamma puts companies back in control of their compliance through data-driven technology solutions. They mine unstructured legislative information and harness AI to de-risk markets, deliver operational efficiencies, protect reputations and open up new revenue opportunities

Visit the site at  
[kammadata.com](http://kammadata.com)

Speak to the team:  
[hello@kammadata.com](mailto:hello@kammadata.com)

[Book a demo](#)